

**SCOTTISHPOWER
RENEWABLES**

East Anglia ONE North and East Anglia TWO Offshore Windfarms

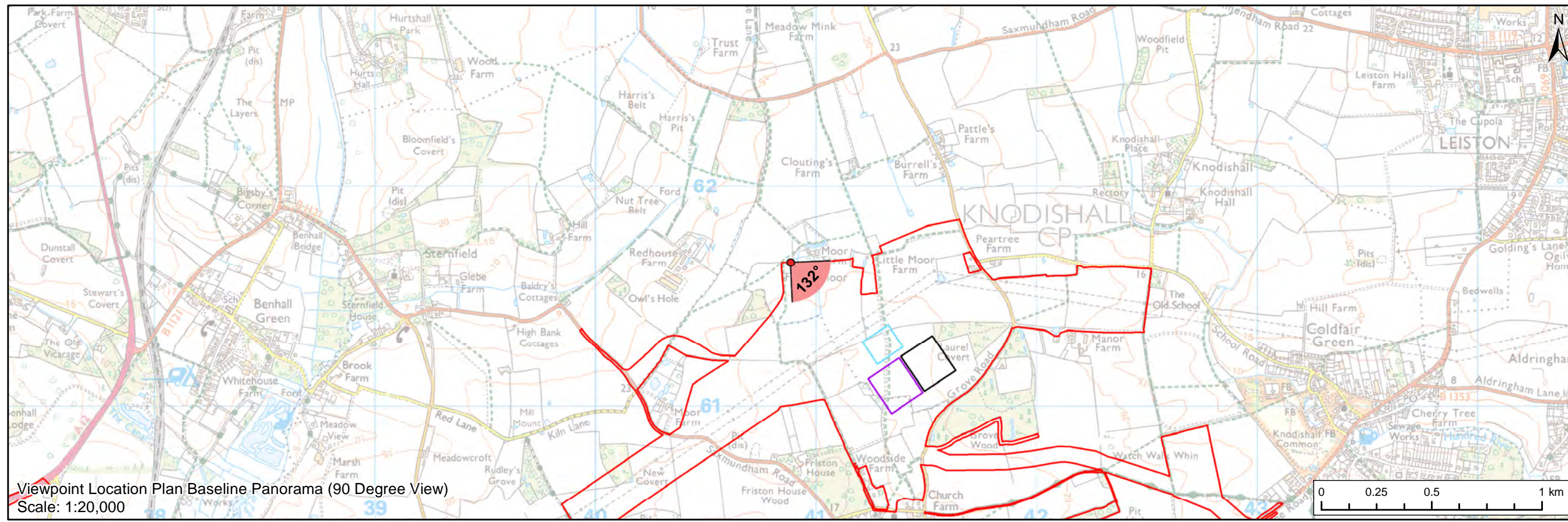
LVIA GIS Addendum

**Appendix 5 Viewpoint 5: Figure 29.17
GIS Update: PRow, near Moor Farm**

Applicants: East Anglia ONE North Limited and East Anglia TWO Limited
Document Reference: ExA.AS-4.D11.V1_05
SPR Reference: EA1N_EA2-DWF-ENV-REP-IBR-001074_05

Date: 7th June 2021
Revision: Version 1
Author: Royal HaskoningDHV

Applicable to East Anglia ONE North and East Anglia TWO



Legend

- East Anglia ONE North and East Anglia TWO Onshore Development Area
- Western Substation (190m x 170m)
- Eastern Substation (190m x 170m)
- Indicative National Grid GIS Substation Location

Viewpoint:

- 90 Degree Field of View Viewpoint
- 53.5 Degree Field of View Viewpoint



Baseline Photograph (90 Degree Field of View)



Rev	Date	By	Comment	Approved:
2	07/06/2021	TH	Second Issue (OPEN)	Prepared: TH
1	25/03/2021	LA	First Issue (OPEN)	Checked: SM

Scale @ A3

East Anglia ONE North and East Anglia TWO		
Viewpoint 5: Public Right of Way, near Moor Farm		
(Figure 29.17 - GIS Update)		
Rev	D11	Coordinate System: BNG Datum: OSGB36
Date	07/06/21	
Figure	29.17a	



Baseline Photograph (53.5 Degree Field of View)

View flat at a comfortable arm's length

OS reference: 640884 E 261654 N
Eye level: 25 m AOD
Direction of view: 105.65°

Horizontal field of view: 53.5° (planar projection)
Principal viewing distance: 812.5 mm
Paper size: 841 x 297 mm (half A1)
Correct printed image size: 820 x 260 mm

Camera: Canon EOS 5D Mark II
Lens: 50mm (Canon EF 50mm f/1.4)
Camera height: 1.5 m AGL
Date and time: 22/02/2019, 13:47:28

Contains Ordnance Survey digital data © Crown copyright, All rights reserved 2020 Licence number 0100031673

Figure: 29.17a
Viewpoint 5: Public Right of Way, near Moor Farm



Baseline Photograph (53.5 Degree Field of View)

View flat at a comfortable arm's length

Contains Ordnance Survey digital data © Crown copyright, All rights reserved 2020 Licence number 0100031673

OS reference:	640884 E 261654 N	Horizontal field of view:	53.5° (planar projection)	Camera:	Canon EOS 5D Mark II
Eye level:	25 m AOD	Principal viewing distance:	812.5 mm	Lens:	50mm (Canon EF 50mm f/1.4)
Direction of view:	159.15°	Paper size:	841 x 297 mm (half A1)	Camera height:	1.5 m AGL
		Correct printed image size:	820 x 260 mm	Date and time:	22/02/2019, 13:47:28

Figure: 29.17a
Viewpoint 5: Public Right of Way, near Moor Farm



Visual representation of 1st year of operational phase
 Photomontage of the proposed western substation and National Grid GIS substation

View flat at a comfortable arm's length

OS reference:	640884 E 261654 N	Horizontal field of view:	53.5° (planar projection)	Camera:	Canon EOS 5D Mark II
Eye level:	25 m AOD	Principal viewing distance:	812.5 mm	Lens:	50mm (Canon EF 50mm f/1.4)
Direction of view:	105.65°	Paper size:	841 x 297 mm (half A1)	Camera height:	1.5 m AGL
		Correct printed image size:	820 x 260 mm	Date and time:	22/02/2019, 13:47:28

Contains Ordnance Survey digital data © Crown copyright, All rights reserved 2020 Licence number 0100031673

Figure: 29.17b
 Viewpoint 5: Public Right of Way, near Moor Farm



Visual representation of 1st year of operational phase
 Photomontage of the proposed western substation and National Grid GIS substation

View flat at a comfortable arm's length

OS reference:	640884 E 261654 N	Horizontal field of view:	53.5° (planar projection)	Camera:	Canon EOS 5D Mark II
Eye level:	25 m AOD	Principal viewing distance:	812.5 mm	Lens:	50mm (Canon EF 50mm f/1.4)
Direction of view:	159.15°	Paper size:	841 x 297 mm (half A1)	Camera height:	1.5 m AGL
		Correct printed image size:	820 x 260 mm	Date and time:	22/02/2019, 13:47:28

Contains Ordnance Survey digital data © Crown copyright, All rights reserved 2020 Licence number 0100031673

Figure: 29.17b
Viewpoint 5: Public Right of Way, near Moor Farm



Visual representation of 15th year of operational phase
 Photomontage of the proposed western substation and National Grid GIS substation

View flat at a comfortable arm's length

OS reference:	640884 E 261654 N	Horizontal field of view:	53.5° (planar projection)	Camera:	Canon EOS 5D Mark II
Eye level:	25 m AOD	Principal viewing distance:	812.5 mm	Lens:	50mm (Canon EF 50mm f/1.4)
Direction of view:	105.65°	Paper size:	841 x 297 mm (half A1)	Camera height:	1.5 m AGL
		Correct printed image size:	820 x 260 mm	Date and time:	22/02/2019, 13:47:28

Contains Ordnance Survey digital data © Crown copyright, All rights reserved 2020 Licence number 0100031673

Figure: 29.17c
 Viewpoint 5: Public Right of Way, near Moor Farm



Visual representation of 15th year of operational phase
 Photomontage of the proposed western substation and National Grid GIS substation

View flat at a comfortable arm's length

OS reference:	640884 E 261654 N	Horizontal field of view:	53.5° (planar projection)	Camera:	Canon EOS 5D Mark II
Eye level:	25 m AOD	Principal viewing distance:	812.5 mm	Lens:	50mm (Canon EF 50mm f/1.4)
Direction of view:	159.15°	Paper size:	841 x 297 mm (half A1)	Camera height:	1.5 m AGL
		Correct printed image size:	820 x 260 mm	Date and time:	22/02/2019, 13:47:28

Contains Ordnance Survey digital data © Crown copyright, All rights reserved 2020 Licence number 0100031673

Figure: 29.17c
 Viewpoint 5: Public Right of Way, near Moor Farm



Visual representation of 1st year of operational phase
 Photomontage of the proposed eastern substation and National Grid GIS substation

View flat at a comfortable arm's length

OS reference:	640884 E 261654 N	Horizontal field of view:	53.5° (planar projection)	Camera:	Canon EOS 5D Mark II
Eye level:	25 m AOD	Principal viewing distance:	812.5 mm	Lens:	50mm (Canon EF 50mm f/1.4)
Direction of view:	105.65°	Paper size:	841 x 297 mm (half A1)	Camera height:	1.5 m AGL
		Correct printed image size:	820 x 260 mm	Date and time:	22/02/2019, 13:47:28

Contains Ordnance Survey digital data © Crown copyright, All rights reserved 2020 Licence number 0100031673

Figure: 29.17b
 Viewpoint 5: Public Right of Way, near Moor Farm



Visual representation of 1st year of operational phase
 Photomontage of the proposed eastern substation and National Grid GIS substation

View flat at a comfortable arm's length

OS reference:	640884 E 261654 N	Horizontal field of view:	53.5° (planar projection)	Camera:	Canon EOS 5D Mark II
Eye level:	25 m AOD	Principal viewing distance:	812.5 mm	Lens:	50mm (Canon EF 50mm f/1.4)
Direction of view:	159.15°	Paper size:	841 x 297 mm (half A1)	Camera height:	1.5 m AGL
		Correct printed image size:	820 x 260 mm	Date and time:	22/02/2019, 13:47:28

Contains Ordnance Survey digital data © Crown copyright, All rights reserved 2020 Licence number 0100031673

Figure: 29.17b
Viewpoint 5: Public Right of Way, near Moor Farm



Visual representation of 15th year of operational phase
 Photomontage of the proposed eastern substation and National Grid GIS substation

View flat at a comfortable arm's length

OS reference:	640884 E 261654 N	Horizontal field of view:	53.5° (planar projection)	Camera:	Canon EOS 5D Mark II
Eye level:	25 m AOD	Principal viewing distance:	812.5 mm	Lens:	50mm (Canon EF 50mm f/1.4)
Direction of view:	105.65°	Paper size:	841 x 297 mm (half A1)	Camera height:	1.5 m AGL
		Correct printed image size:	820 x 260 mm	Date and time:	22/02/2019, 13:47:28

Contains Ordnance Survey digital data © Crown copyright, All rights reserved 2020 Licence number 0100031673

Figure: 29.17c
Viewpoint 5: Public Right of Way, near Moor Farm



Visual representation of 15th year of operational phase
 Photomontage of the proposed eastern substation and National Grid GIS substation

View flat at a comfortable arm's length

OS reference:	640884 E 261654 N	Horizontal field of view:	53.5° (planar projection)	Camera:	Canon EOS 5D Mark II
Eye level:	25 m AOD	Principal viewing distance:	812.5 mm	Lens:	50mm (Canon EF 50mm f/1.4)
Direction of view:	159.15°	Paper size:	841 x 297 mm (half A1)	Camera height:	1.5 m AGL
		Correct printed image size:	820 x 260 mm	Date and time:	22/02/2019, 13:47:28

Contains Ordnance Survey digital data © Crown copyright, All rights reserved 2020 Licence number 0100031673

Figure: 29.17c
Viewpoint 5: Public Right of Way, near Moor Farm



Visual representation of 1st year of operational phase
 Photomontage of the proposed western substation, eastern substation and National Grid GIS substation

View flat at a comfortable arm's length

OS reference:	640884 E 261654 N	Horizontal field of view:	53.5° (planar projection)	Camera:	Canon EOS 5D Mark II
Eye level:	25 m AOD	Principal viewing distance:	812.5 mm	Lens:	50mm (Canon EF 50mm f/1.4)
Direction of view:	105.65°	Paper size:	841 x 297 mm (half A1)	Camera height:	1.5 m AGL
		Correct printed image size:	820 x 260 mm	Date and time:	22/02/2019, 13:47:28

Contains Ordnance Survey digital data © Crown copyright, All rights reserved 2020 Licence number 0100031673

Figure: 29.17d
Viewpoint 5: Public Right of Way, near Moor Farm



Visual representation of 1st year of operational phase
 Photomontage of the proposed western substation, eastern substation and National Grid GIS substation

View flat at a comfortable arm's length

OS reference:	640884 E 261654 N	Horizontal field of view:	53.5° (planar projection)	Camera:	Canon EOS 5D Mark II
Eye level:	25 m AOD	Principal viewing distance:	812.5 mm	Lens:	50mm (Canon EF 50mm f/1.4)
Direction of view:	159.15°	Paper size:	841 x 297 mm (half A1)	Camera height:	1.5 m AGL
		Correct printed image size:	820 x 260 mm	Date and time:	22/02/2019, 13:47:28

Contains Ordnance Survey digital data © Crown copyright, All rights reserved 2020 Licence number 0100031673

Figure: 29.17d
Viewpoint 5: Public Right of Way, near Moor Farm



Visual representation of 15th year of operational phase
 Photomontage of the proposed western substation, eastern substation and National Grid GIS substation

View flat at a comfortable arm's length

OS reference:	640884 E 261654 N	Horizontal field of view:	53.5° (planar projection)	Camera:	Canon EOS 5D Mark II
Eye level:	25 m AOD	Principal viewing distance:	812.5 mm	Lens:	50mm (Canon EF 50mm f/1.4)
Direction of view:	105.65°	Paper size:	841 x 297 mm (half A1)	Camera height:	1.5 m AGL
		Correct printed image size:	820 x 260 mm	Date and time:	22/02/2019, 13:47:28

Contains Ordnance Survey digital data © Crown copyright, All rights reserved 2020 Licence number 0100031673

Figure: 29.17e
Viewpoint 5: Public Right of Way, near Moor Farm



Visual representation of 15th year of operational phase
 Photomontage of the proposed western substation, eastern substation and National Grid GIS substation

View flat at a comfortable arm's length

OS reference:	640884 E 261654 N	Horizontal field of view:	53.5° (planar projection)	Camera:	Canon EOS 5D Mark II
Eye level:	25 m AOD	Principal viewing distance:	812.5 mm	Lens:	50mm (Canon EF 50mm f/1.4)
Direction of view:	159.15°	Paper size:	841 x 297 mm (half A1)	Camera height:	1.5 m AGL
		Correct printed image size:	820 x 260 mm	Date and time:	22/02/2019, 13:47:28

Contains Ordnance Survey digital data © Crown copyright, All rights reserved 2020 Licence number 0100031673

Figure: 29.17e
Viewpoint 5: Public Right of Way, near Moor Farm



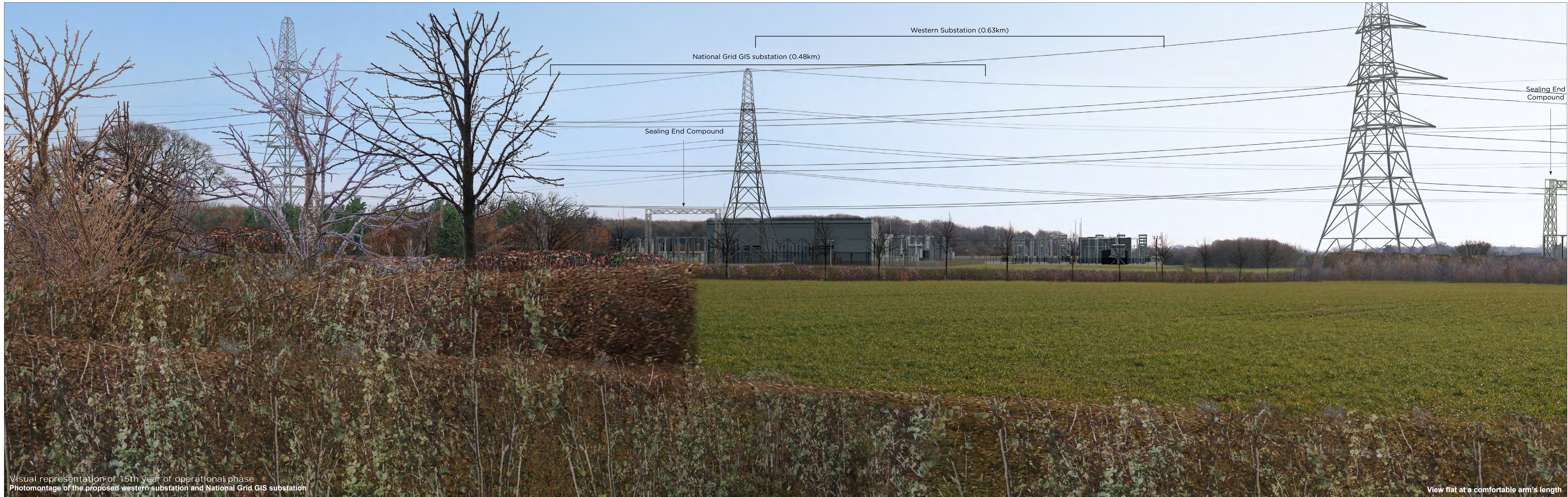
Visual representation of 1st year of operational phase
 Photomontage of the proposed western substation and National Grid GIS substation

View flat at a comfortable arm's length

OS reference:	640884 E 261654 N	Horizontal field of view:	53.5° (planar projection)	Camera:	Canon EOS 5D Mark II
Eye level:	25 m AOD	Principal viewing distance:	812.5 mm	Lens:	50mm (Canon EF 50mm f/1.4)
Direction of view:	132°	Paper size:	841 x 297 mm (half A1)	Camera height:	1.5 m AGL
		Correct printed image size:	820 x 260 mm	Date and time:	22/02/2019, 13:47:28

Contains Ordnance Survey digital data © Crown copyright, All rights reserved 2020 Licence number 0100031673

Figure: 29.17f
Viewpoint 5: Public Right of Way, near Moor Farm



Visual representation of 15th year of operational phase
 Photomontage of the proposed western substation and National Grid GIS substation

View flat at a comfortable arm's length

OS reference:	640884 E 261654 N	Horizontal field of view:	53.5° (planar projection)	Camera:	Canon EOS 5D Mark II
Eye level:	25 m AOD	Principal viewing distance:	812.5 mm	Lens:	50mm (Canon EF 50mm f/1.4)
Direction of view:	132°	Paper size:	841 x 297 mm (half A1)	Camera height:	1.5 m AGL
		Correct printed image size:	820 x 260 mm	Date and time:	22/02/2019, 13:47:28

Contains Ordnance Survey digital data © Crown copyright, All rights reserved 2020 Licence number 0100031673

Figure: 29.17g
Viewpoint 5: Public Right of Way, near Moor Farm



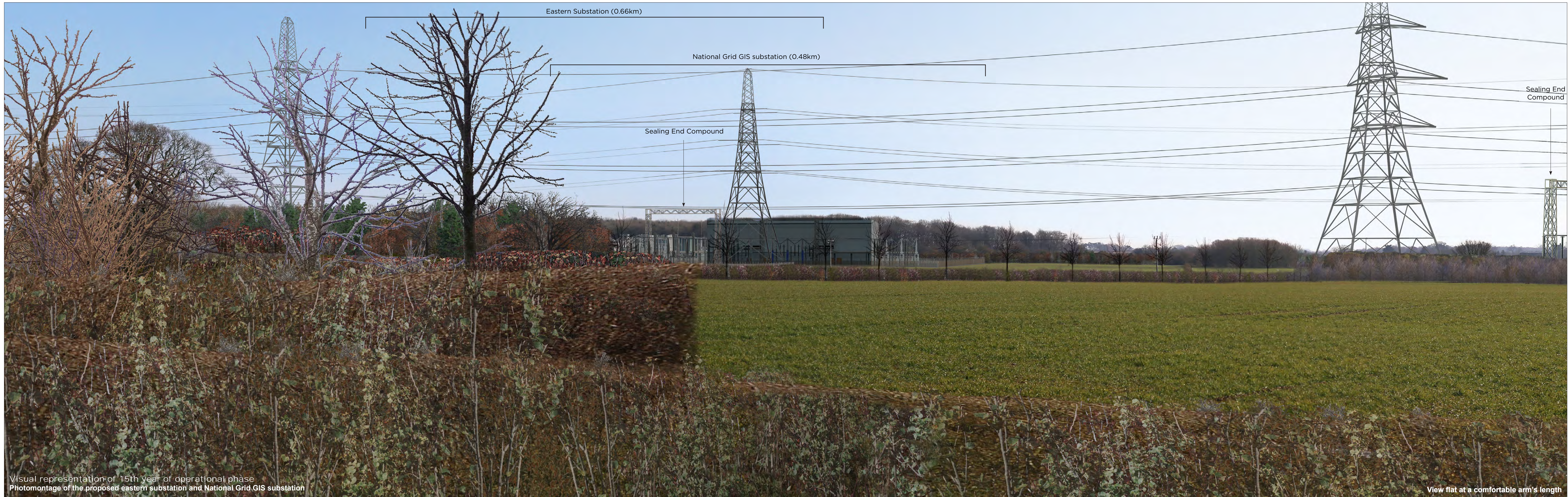
Visual representation of 1st year of operational phase
 Photomontage of the proposed eastern substation, western substation and National Grid GIS substation

View flat at a comfortable arm's length

OS reference:	640884 E 261654 N	Horizontal field of view:	53.5° (planar projection)	Camera:	Canon EOS 5D Mark II
Eye level:	25 m AOD	Principal viewing distance:	812.5 mm	Lens:	50mm (Canon EF 50mm f/1.4)
Direction of view:	132°	Paper size:	841 x 297 mm (half A1)	Camera height:	1.5 m AGL
		Correct printed image size:	820 x 260 mm	Date and time:	22/02/2019, 13:47:28

Contains Ordnance Survey digital data © Crown copyright, All rights reserved 2020 Licence number 0100031673

Figure: 29.17f
Viewpoint 5: Public Right of Way, near Moor Farm



Visual representation of 15th year of operational phase
 Photomontage of the proposed eastern substation and National Grid GIS substation

View flat at a comfortable arm's length

OS reference:	640884 E 261654 N	Horizontal field of view:	53.5° (planar projection)	Camera:	Canon EOS 5D Mark II
Eye level:	25 m AOD	Principal viewing distance:	812.5 mm	Lens:	50mm (Canon EF 50mm f/1.4)
Direction of view:	132°	Paper size:	841 x 297 mm (half A1)	Camera height:	1.5 m AGL
		Correct printed image size:	820 x 260 mm	Date and time:	22/02/2019, 13:47:28

Contains Ordnance Survey digital data © Crown copyright, All rights reserved 2020 Licence number 0100031673

Figure: 29.17g
Viewpoint 5: Public Right of Way, near Moor Farm



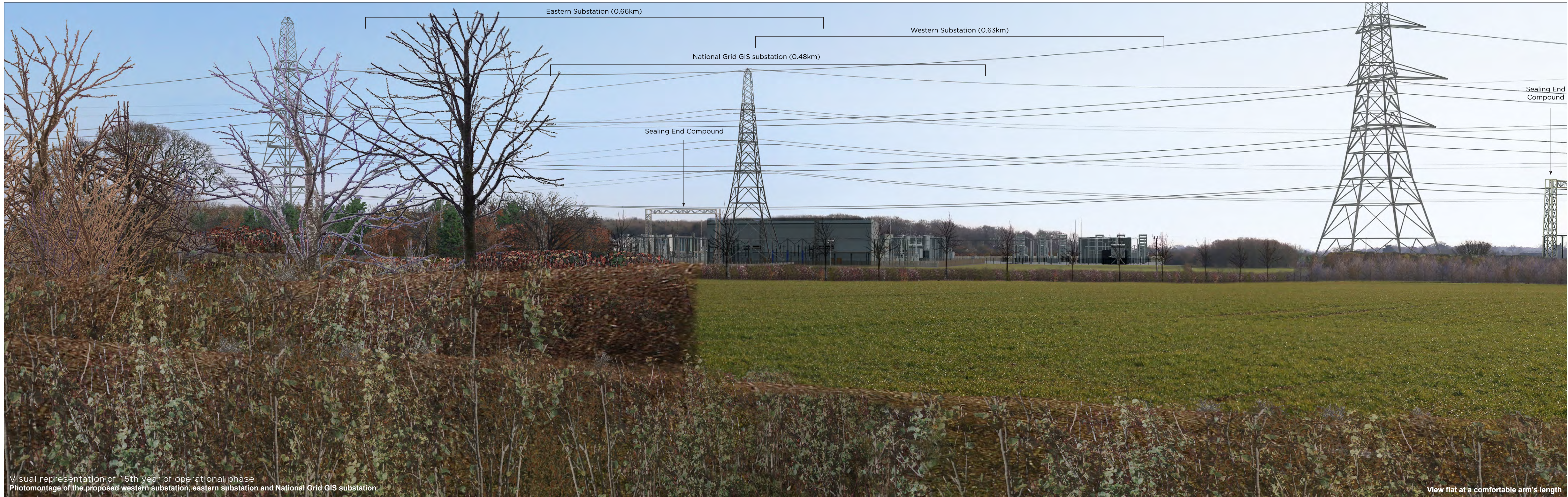
OS reference: 640884 E 261654 N
 Eye level: 25 m AOD
 Direction of view: 132°

Horizontal field of view: 53.5° (planar projection)
 Principal viewing distance: 812.5 mm
 Paper size: 841 x 297 mm (half A1)
 Correct printed image size: 820 x 260 mm

Camera: Canon EOS 5D Mark II
 Lens: 50mm (Canon EF 50mm f/1.4)
 Camera height: 1.5 m AGL
 Date and time: 22/02/2019, 13:47:28

Contains Ordnance Survey digital data © Crown copyright, All rights reserved 2020 Licence number 0100031673

Figure: 29.17h
Viewpoint 5: Public Right of Way, near Moor Farm



Visual representation of 15th year of operational phase
 Photomontage of the proposed western substation, eastern substation and National Grid GIS substation

View flat at a comfortable arm's length

OS reference:	640884 E 261654 N	Horizontal field of view:	53.5° (planar projection)	Camera:	Canon EOS 5D Mark II
Eye level:	25 m AOD	Principal viewing distance:	812.5 mm	Lens:	50mm (Canon EF 50mm f/1.4)
Direction of view:	132°	Paper size:	841 x 297 mm (half A1)	Camera height:	1.5 m AGL
		Correct printed image size:	820 x 260 mm	Date and time:	22/02/2019, 13:47:28

Contains Ordnance Survey digital data © Crown copyright, All rights reserved 2020 Licence number 0100031673

Figure: 29.17i
Viewpoint 5: Public Right of Way, near Moor Farm